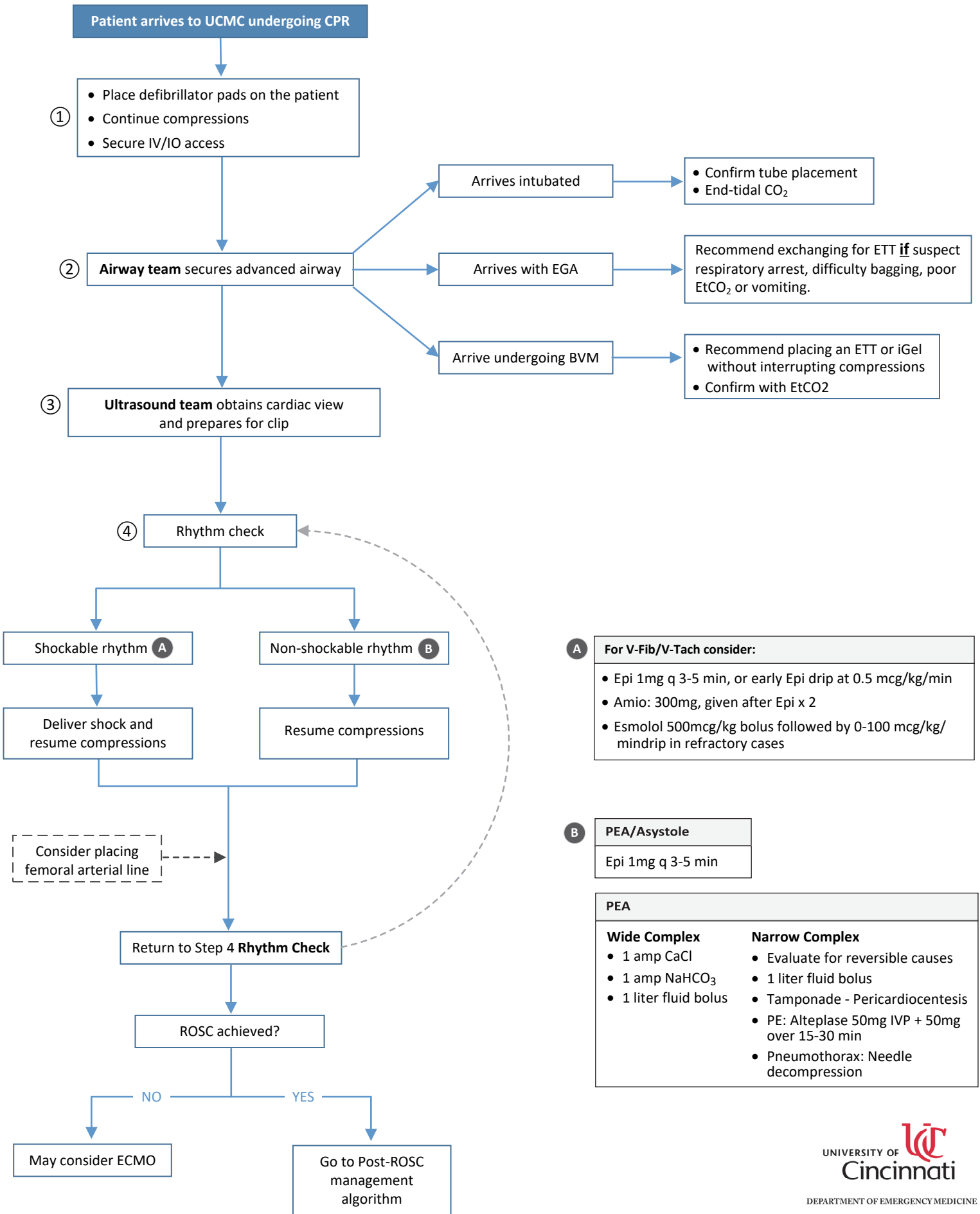


Cardiac Arrest



A For V-Fib/V-Tach consider:

- Epi 1mg q 3-5 min, or early Epi drip at 0.5 mcg/kg/min
- Amio: 300mg, given after Epi x 2
- Esmolol 500mcg/kg bolus followed by 0-100 mcg/kg/ mindrip in refractory cases

B PEA/Asystole
Epi 1mg q 3-5 min

PEA	
Wide Complex <ul style="list-style-type: none"> 1 amp CaCl 1 amp NaHCO₃ 1 liter fluid bolus 	Narrow Complex <ul style="list-style-type: none"> Evaluate for reversible causes 1 liter fluid bolus Tamponade - Pericardiocentesis PE: Alteplase 50mg IVP + 50mg over 15-30 min Pneumothorax: Needle decompression