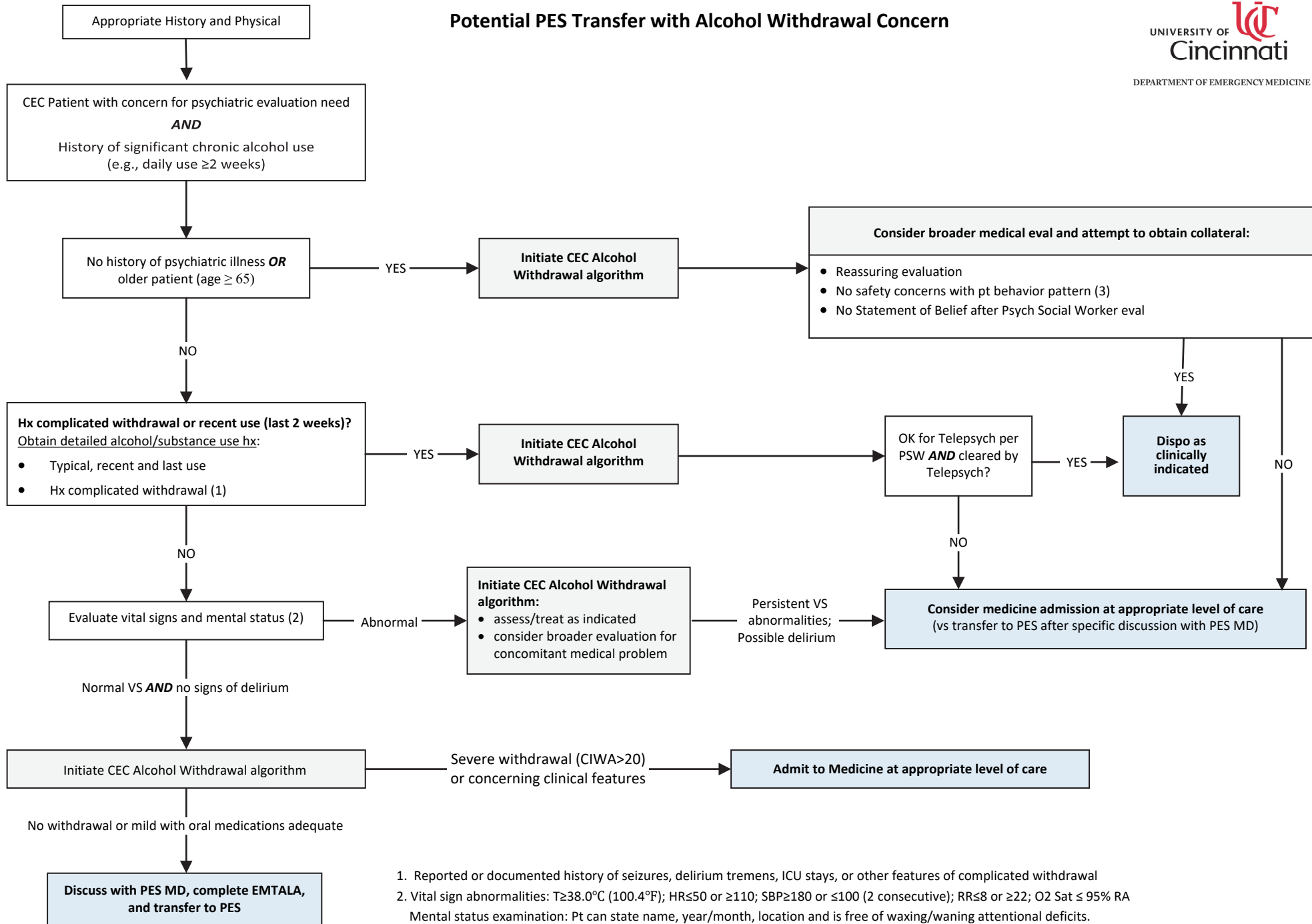


# Potential PES Transfer with Alcohol Withdrawal Concern



1. Reported or documented history of seizures, delirium tremens, ICU stays, or other features of complicated withdrawal
2. Vital sign abnormalities: T≥38.0°C (100.4°F); HR≤50 or ≥110; SBP≥180 or ≤100 (2 consecutive); RR≤8 or ≥22; O2 Sat ≤ 95% RA  
Mental status examination: Pt can state name, year/month, location and is free of waxing/waning attentional deficits.  
Providers may elect to use Quick Confusion Scale to formally evaluate degree of delirium, if warranted. <https://doi.org/10.1053/ajem.2001.25769>
3. Geriatric patients with behavioral disturbance unable to be managed at nursing facilities/LTACs/rehabs less likely appropriate for PES