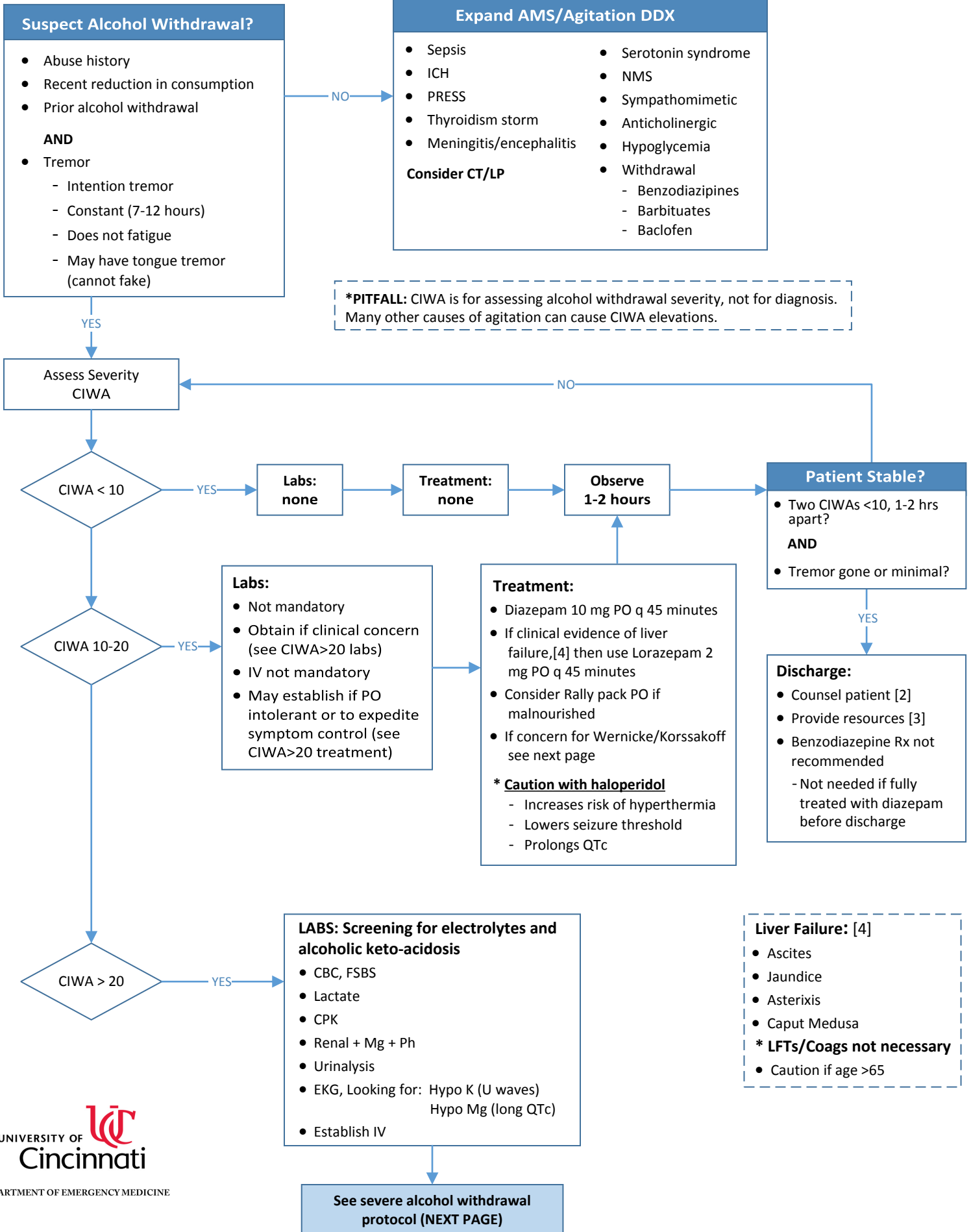


# Alcohol Withdrawal Syndrome



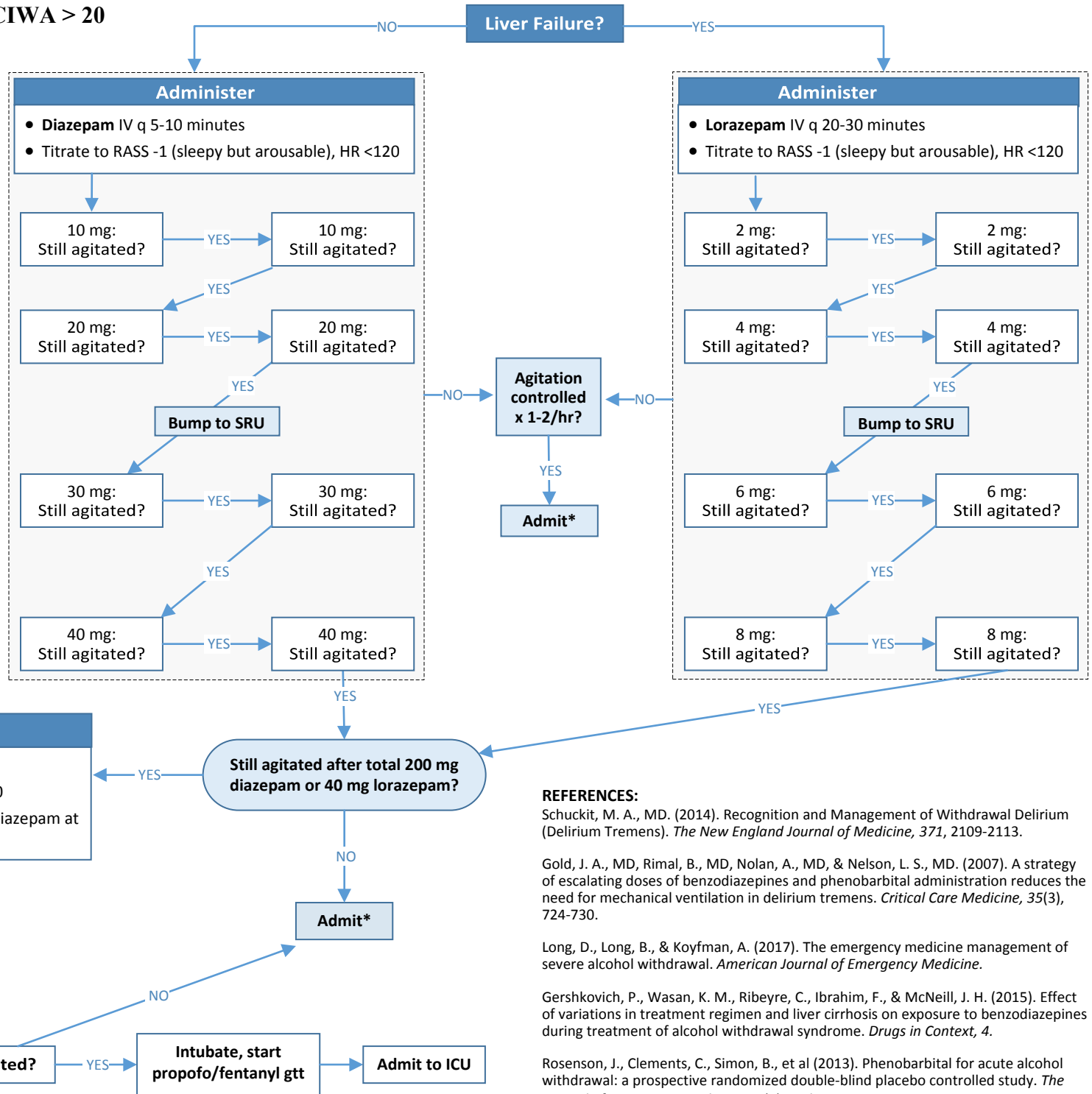
# Severe Alcohol Withdrawal Protocol CIWA > 20

**Wernick-Korsakoff Treatment**

- Thiamine IV 500 mg q 8 hrs for 3 days
- Admit

**\* ICU criteria:**

- Intubated
- Severe AMS
- Recurrent seizures
- Hyperthermia
- Benzodiazepine resistance
- Other ICU criteria



**REFERENCES:**

Schuckit, M. A., MD. (2014). Recognition and Management of Withdrawal Delirium (Delirium Tremens). *The New England Journal of Medicine*, 371, 2109-2113.

Gold, J. A., MD, Rimal, B., MD, Nolan, A., MD, & Nelson, L. S., MD. (2007). A strategy of escalating doses of benzodiazepines and phenobarbital administration reduces the need for mechanical ventilation in delirium tremens. *Critical Care Medicine*, 35(3), 724-730.

Long, D., Long, B., & Koyfman, A. (2017). The emergency medicine management of severe alcohol withdrawal. *American Journal of Emergency Medicine*.

Gershkovich, P., Wasan, K. M., Ribeyre, C., Ibrahim, F., & McNeill, J. H. (2015). Effect of variations in treatment regimen and liver cirrhosis on exposure to benzodiazepines during treatment of alcohol withdrawal syndrome. *Drugs in Context*, 4.

Rosenson, J., Clements, C., Simon, B., et al (2013). Phenobarbital for acute alcohol withdrawal: a prospective randomized double-blind placebo controlled study. *The Journal of Emergency Medicine*, 44(3), 2nd ser., 592-598.