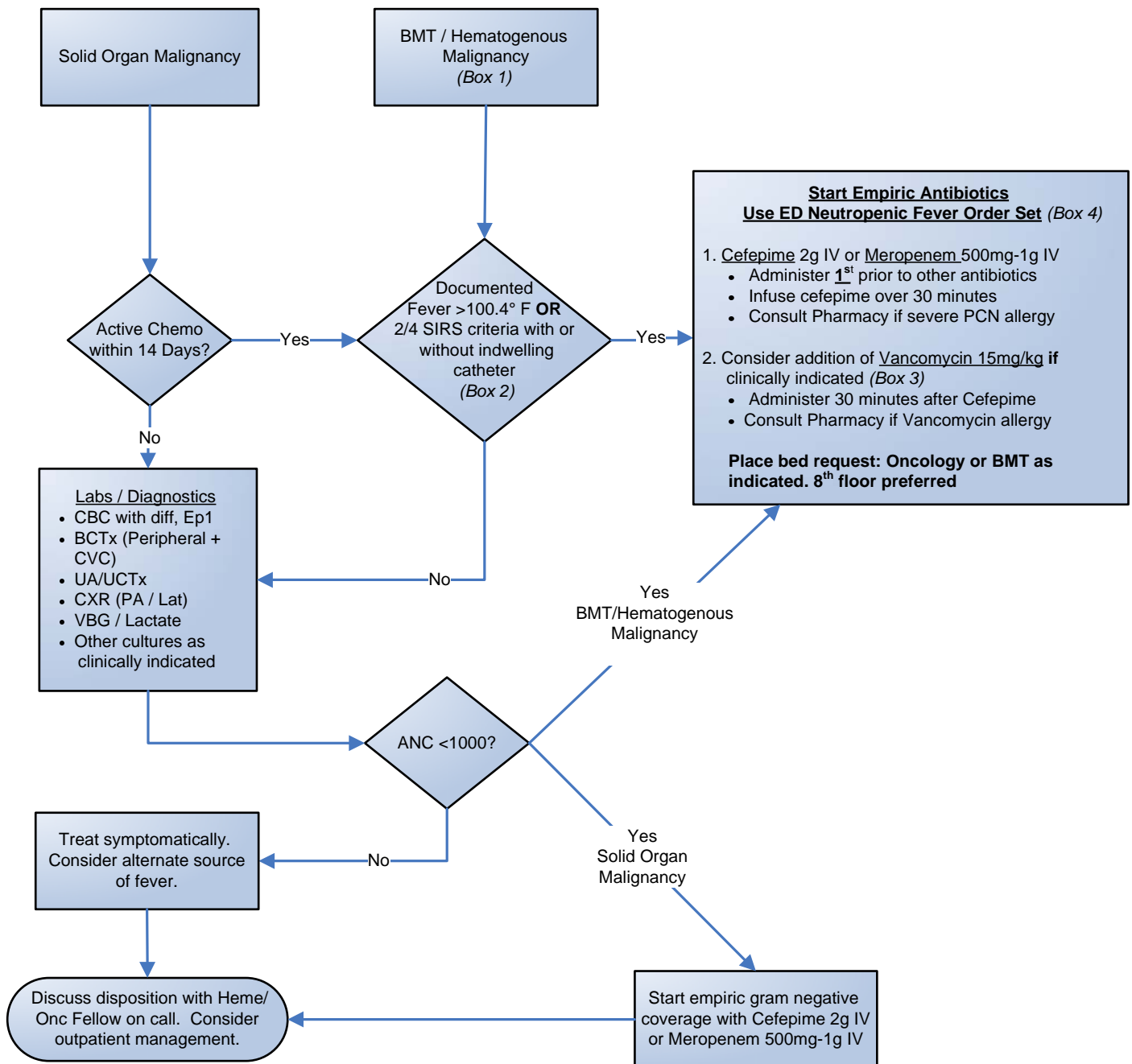


EmergencyKT: Malignancy with Systemic Inflammatory Response Criteria

For patients at high risk for neutropenic fever or chemotherapy associated fever.

Goal time to empiric antibiotic administration: <2 hours from arrival.



(Box 1)

Hematogenous Malignancy

- Leukemia
ALL, AML, CLL, CML
- Lymphoma
Hodgkins, Non-Hodgkins
- Multiple Myeloma
- Myelodysplastic Syndrome

(Box 2)

SIRS Criteria (2 of 4)

- Temp >100.4°F or <96.8°F
- HR >90 BPM
- RR >20 or PaCO₂ <32
- WBC >12, <4, or >10% bands

(Box 3)

Indications for Vancomycin Administration

- Clinically apparent serious catheter related infection
- Blood culture positive for gram positive bacteremia
- Known colonization with PCN / Cephalosporin resistant pneumococci or MRSA
- Hypotension or septic shock
- Soft tissue infection
- Pneumonia

(Box 4)

ED Neutropenic Order Set Includes:

- **Antibiotic orders mapped directly to ED-Pyxis for rapid administration.**
- CBC with diff, Ep1, LFT, VBG, Lactate
- BCTx (peripheral + CVC)
- UA/UCTx
- CXR (PA/Lat)
- Other cultures as clinically indicated:
Sputum CTx, Cdiff, Influenza, Thrush
- IVF